

BY-BRIDGE



FEATURES:

- Load capacities: 400kg
- Working area: 1x10 m
- Rotation basket 280°
- Intervention depth: 14m
- Mounted on truck, rail wagons or special flatcars

MINI BY-BRIDGE



FEATURES:

Designed to limit as much as possible the obstruction of the carriageway:

- Load capacities: up to 400kg
- Working area: 2.5x2.5m
- Intervention depth: 4m
- Electro-hydraulic or hand controls



PORTAL PLATFORM



FEATURES:

- Load capacity 10000kg
- Working area 2.3x23m
- Intervention depth: 5m
- Portal gauge: 16.5m
- Equipped with suspended bridges for the maintenance of the piers and with secondary platforms for the maintenance of the girders.



UNDERBRIDGE PLATFORMS

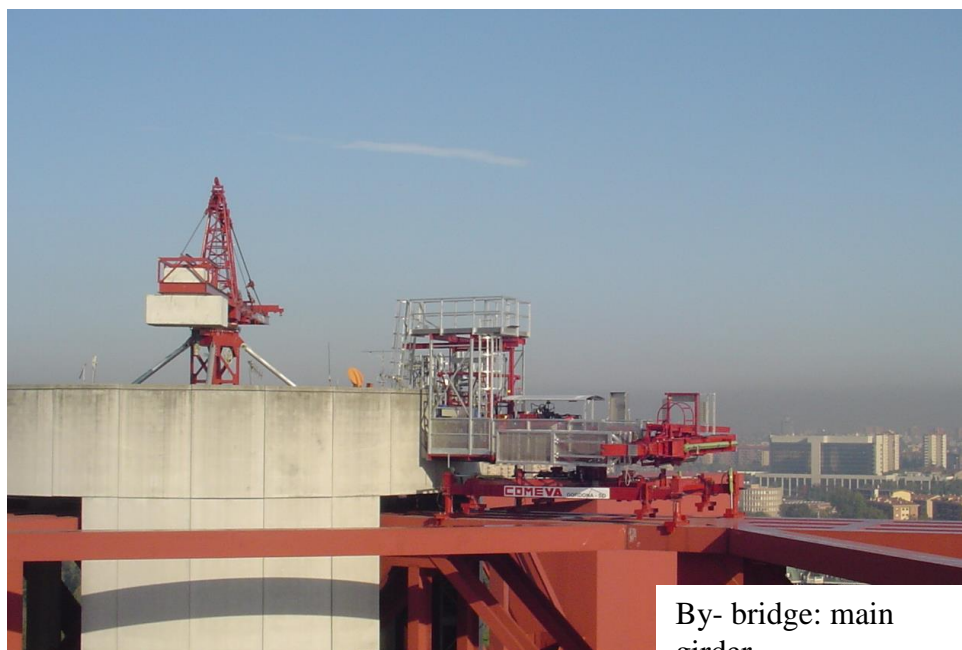


FEATURES:

- Self-launching platforms without bulk on the carriageway
- Load capacities 500kg
- Vertical shifting for the maintenance of the piers
- Electric, hydraulic and pneumatic controls



BY-BRIDGE FOR THE STADIUM IN MILAN



By- bridge: main girder

By-bridges designed for the maintenance of the bearing girders of the covering of the Stadium "G. Meazza" in Milan



Diagonal basket



By-bridge: internal girder



PLATFORMS FOR THE STADIUM IN MILAN



For the reinforcement of the brackets

Designed to realise the reinforcement and the maintenance of the second ring in the stadium "G.Meazza" in Milan:



For the maintenance of the ramps



For the maintenance of the dry bridge, Second ring

PANTOGRAPH PLATFORMS



FEATURES:

- Load capacities 5 t
- Max. height from the ground 6.5m
- Platform dimensions 7x6m
- Mounted on truck, wagons or special flatcars

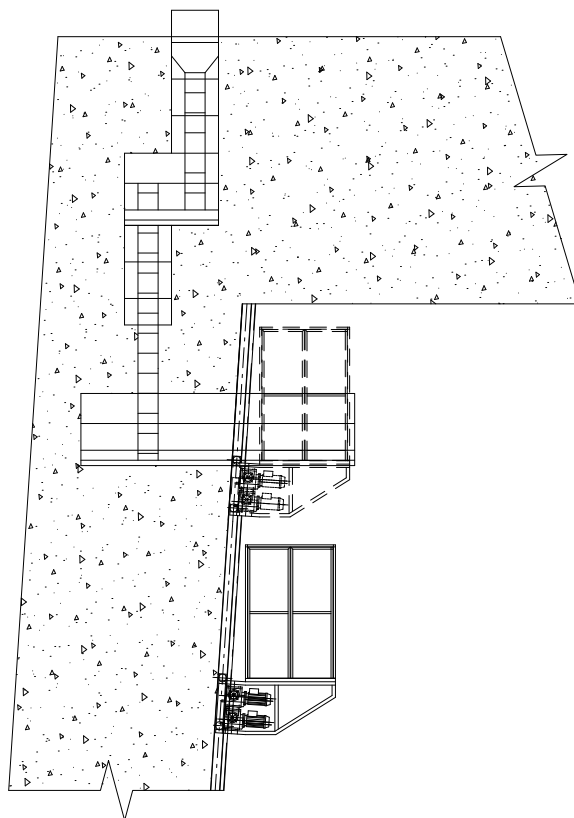
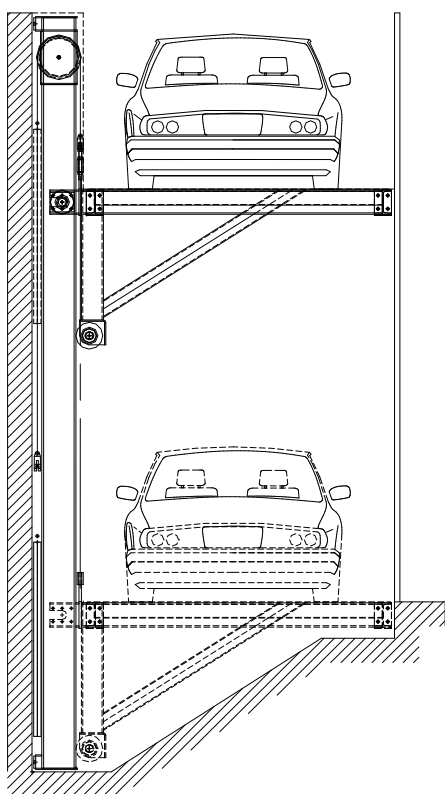


TRAVELLING PLATFORMS ON PILLARS



FEATURES:

- Load capacities up to 6000kg
- Dimensions of platforms 3x6m
- Suited to the lifting of people and/or things
- Hydraulic or electric lifting
- Self-carrying runways or to be tied up to the existent structures



SPECIAL MAINTENANCE EQUIPMENT



FEATURES:

- Load capacities on the basket 500 daN
- External basket dimensions 0,8 x 2 x H1,1 m
- Turret rotation 200°
- Mounted on truck, wagons or special flatcars

