

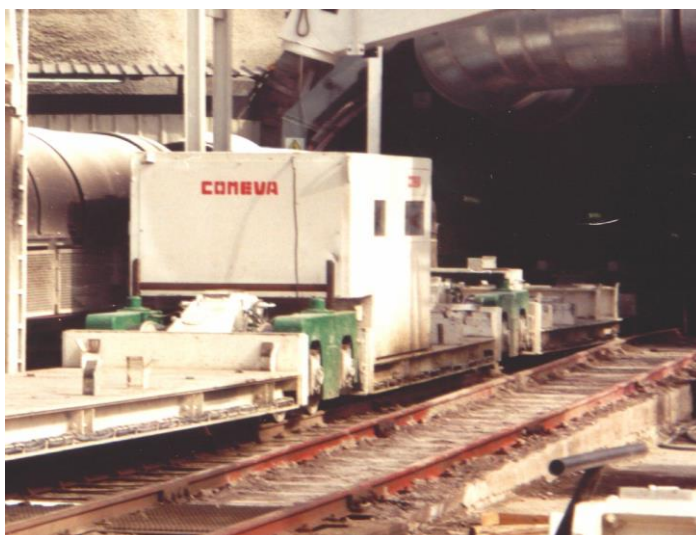
## WAGONS

### TRANSPORT PEOPLE



#### FEATURES:

- Open or closed, smoke tight (emergency train)
- Possibility to carry more litters
- With or without base frame in order to be positioned on standard skid platform
- Standard or plate hooks
- Mono or bi-pipe brake system

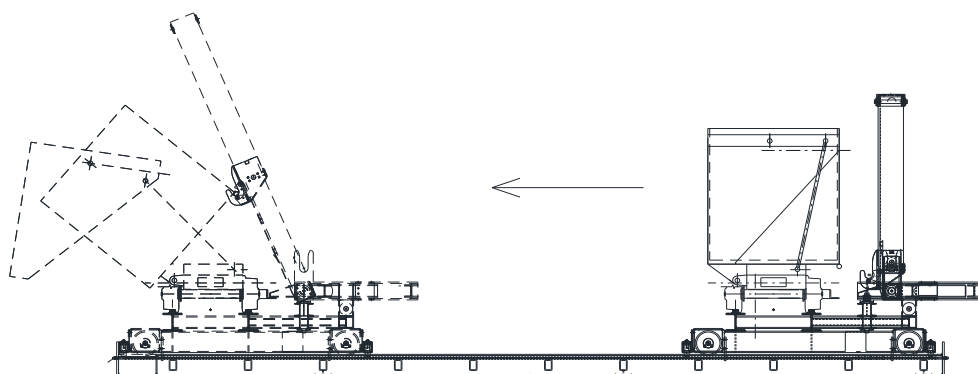


## RAIL WAGONS MUCK CAR



### FEATURES:

- Load capacity up to 25 m<sup>3</sup>
- Dumping, fixed or removable case
- Standard or plate hooks
- Mono or bi-pipe brake system
- Hydraulic dumps with fixed or mobile station (parallel or perpendicular to the railway center line)





## RAIL WAGONS TRANSPORT SEGMENTS



### FEATURES:

- Load capacities up to 20t
- Fixed, manual or centralised saddle
- Standard or plate hooks
- Mono or bi-pipe brake system



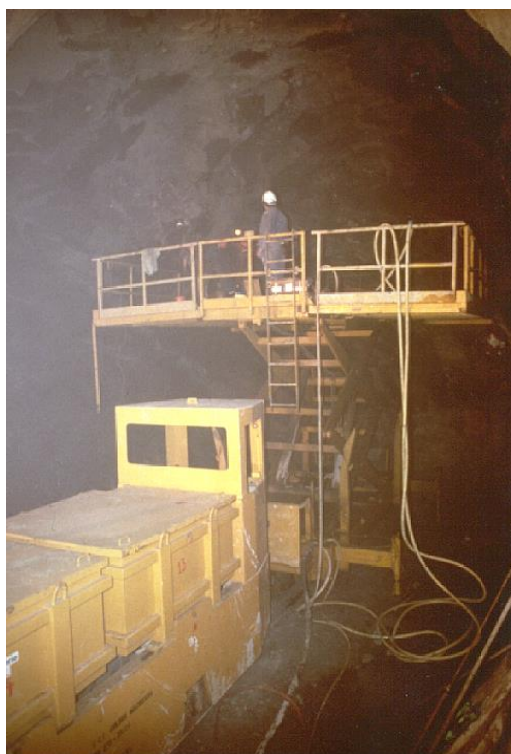


## RAIL WAGONS SPECIAL WAGONS



### CRANE WAGONS:

- Reach 12m
- Lifting capacity 15tm
- Loading flatcars 6m



### PLATFORM WAGONS:

- Load capacities 5 t
- Max. height from the ground 6.5m
- Platform dimensions 6x6 m

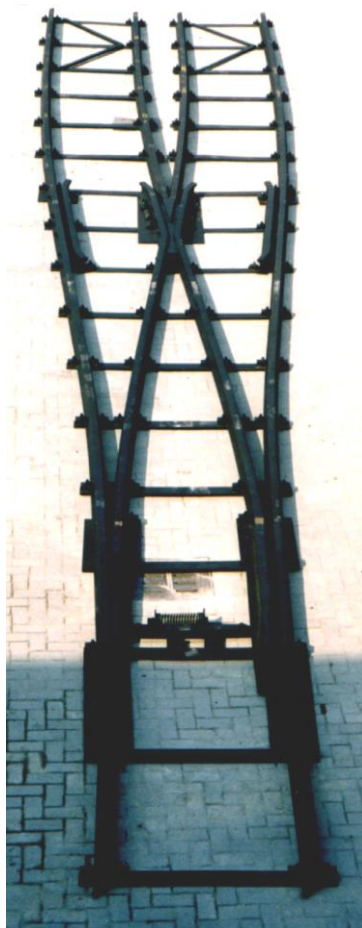


### DRIVE WAGONS:

- Load capacities 5 t



## SWITCHES



### FEATURES:

- Right, left or symmetrical
- Three or four ways
- Handling with position target or with spring
- Machined or rail points
- gauge, bending radius: according to the needs

